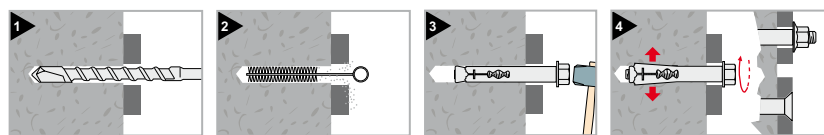


TSA-PATTEN

Ancorante in lamiera avvolta
Metal sleeve anchor



Vite TE cl. 8.8
Zincato bianco

Hex head screw grade 8.8
White zinc plated



Cod.	Tipo Type	Tassello Plug Ø x L	Vite Screw	Sp. fissabile Fixing thickness max	Conf. Pkg.	Imballo Outerbox
79602b08045	TSA 8/08	8x45	M6	8	100	1000
79602b08060	TSA 8/23	8x60	M6	23	100	800
79602b08080	TSA 8/43	8x80	M6	43	50	500
79602b08100	TSA 8/63	8x100	M6	63	50	400
79602b08120	TSA 8/83	8x120	M6	83	25	300
79602b08140	TSA 8/103	8x140	M6	103	25	300
79602b08160	TSA 8/123	8x160	M6	123	20	240
79602b10060	TSA 10/15	10x60	M8	15	50	400
79602b10080	TSA 10/35	10x80	M8	35	50	300
79602b10100	TSA 10/55	10x100	M8	55	25	250
79602b10120	TSA 10/75	10x120	M8	75	20	200
79602b10140	TSA 10/95	10x140	M8	95	20	240
79602b10160	TSA 10/115	10x160	M8	115	20	240
79602b12070	TSA 12/17	12x70	M10	17	50	200
79602b12100	TSA 12/47	12x100	M10	47	25	200
79602b12130	TSA 12/77	12x130	M10	77	20	120
79602b12150	TSA 12/97	12x150	M10	97	10	120
79602b16070	TSA 16/03	16x70	M12	3	10	100
79602b16110	TSA 16/40	16x110	M12	40	10	100
79602b16150	TSA 16/80	16x150	M12	80	5	60



Vite TPSEI cl. 8.8
Zincato bianco

Hex socket countersunk head
screw grade 8.8
White zinc plated

Cod.	Tipo Type	Tassello Plug Ø x L	Filettatura Thread	Sp. fissabile Fixing thickness max	Conf. Pkg.	Imballo Outerbox
79603b08060	TSA 8/28	8x60	M6	28	100	1000
79603b08080	TSA 8/48	8x80	M6	48	50	800
79603b08100	TSA 8/68	8x100	M6	68	50	500
79603b10060	TSA 10/20	10x60	M8	20	50	500
79603b10080	TSA 10/40	10x80	M8	40	50	300
79603b10100	TSA 10/60	10x100	M8	60	25	400
79603b10120	TSA 10/80	10x120	M8	80	20	320
79603b12070	TSA 12/22	12x70	M10	22	50	300
79603b12100	TSA 12/52	12x100	M10	52	25	250



Dado flangiato
Zincato bianco

Flanged nut
White zinc plated

Cod.	Tipo Type	Tassello Plug Ø x L	Filettatura Thread	Sp. fissabile Fixing thickness max	Conf. Pkg.	Imballo Outerbox
79600b08040	TSA 8/05	8x40	M6	5	100	1000
79600b08065	TSA 8/30	8x65	M6	30	50	500
79600b10050	TSA 10/10	10x50	M8	10	50	500
79600b10077	TSA 10/37	10x77	M8	37	50	400
79600b10097	TSA 10/57	10x97	M8	57	25	250
79600b12075	TSA 12/25	12x75	M10	25	25	250
79600b12099	TSA 12/49	12x99	M10	49	20	200
79600b12129	TSA 12/79	12x129	M10	79	20	160
79600b16065	TSA 16/10	16x65	M12	10	20	200
79600b16111	TSA 16/56	16x111	M12	56	10	100
79600b16147	TSA 16/92	16x147	M12	92	10	120

TO

Tassello in ottone
Brass anchor



Tassello in ottone con zigrinatura

Brass anchor with knurling

Cod.	Tassello Plug Ø x L	Filettatura Thread	Conf. Pkg.
75100004000	5x15	M4	200
75100005000	6,5x20	M5	200
75100006000	8x23	M6	200
75100008000	10x28	M8	100
75100010000	12x32	M10	100
75100012000	15x38	M12	100
75100014000	18x42	M14	50



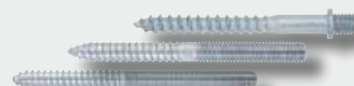
INS p. 205



G60 p. 85

**CONSIGLI
PER GLI
ACQUISTI**

**WE ALSO
RECOMMEND**



VCC / VCS / VSS p. 278-279

FRÜLSIDER
2022